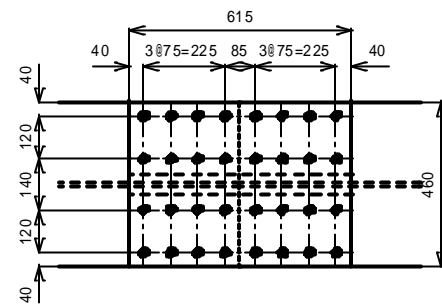
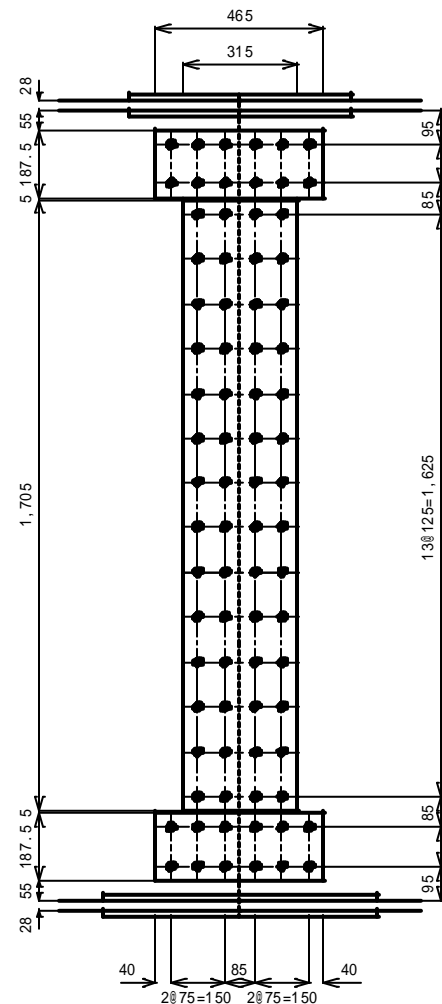


外桁

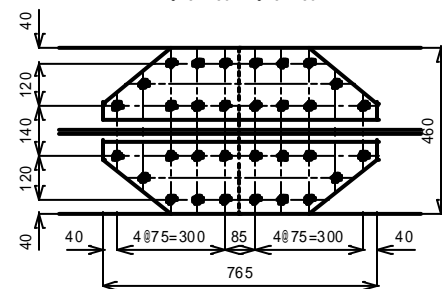
1-Spl PL 460*16*615
2-Spl PL 200*16*615
32-H.T.Bolt M22*100



2-Spl PL 1,705*10*315
4-Spl PL 187.5*10*465
80-H.T.Bolt M22*70

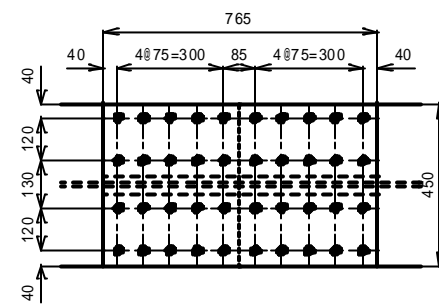


1-Spl PL 460*16*765
2-Spl PL 200*16*765
32-H.T.Bolt M22*100

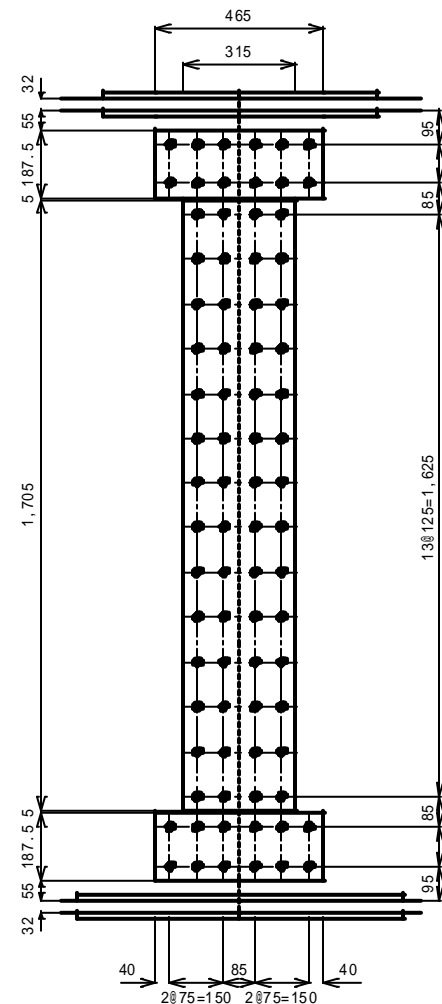


中桁

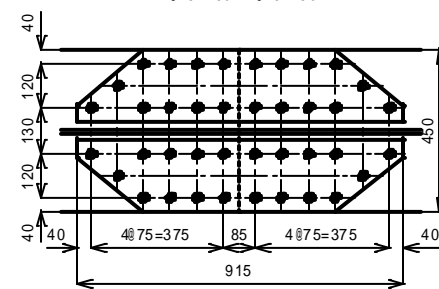
1-Spl PL 450*16*765
2-Spl PL 200*16*765
40-H.T.Bolt M22*105



2-Spl PL 1,705*10*315
4-Spl PL 187.5*10*465
80-H.T.Bolt M22*70

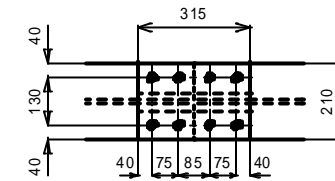


1-Spl PL 450*18*915
2-Spl PL 200*18*915
40-H.T.Bolt M22*110

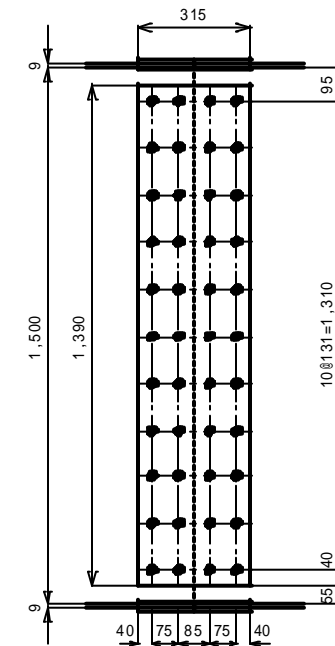


横桁

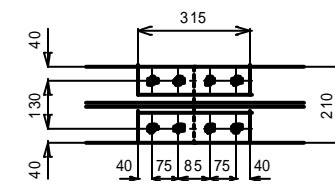
1-Spl PL 210*9*315
2-Spl PL 80*9*315
8-H.T.Bolt M22*70



2-Spl PL 1,390*10*315
44-H.T.Bolt M22*70



1-Spl PL 210*9*315
2-Spl PL 80*9*315
8-H.T.Bolt M22*70



図名	単純非合成鋼 P G 道路橋
	現場継手
縮尺	1 / 20
学籍番号	9 8 1 7 0 9 4
氏名	菱沼 貴政